
Supprt Your Hard Life

TryAnt®

SINCE 2009

TRYANT GLOVE

For those who work
Safety and Reliability
A brand that continues to pursue

TryAnt[®]



Contents

Contents

01	Safty shoes	P 01~ P 08
02	Rubber boots	P 09
03	Artificial leather	P 10~ P 16
04	Synthetic leather	P 17~ P 18
05	Leather gloves	P 19~ P 21
06	Coated gloves	P 22~ P 24
07	Military gloves (non-slip gloves)	P 25
08	Raincoat	P 26
09	Socks	P 27
10	T.A.V	P 28

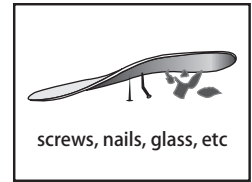
※Items marked with * in the catalog are while supplies last.

01 Safety shoes

Mantis

- Production method : Cement type
- Front protection : Steel
- Shell: High-durability polyurethane
- Shoe soles: Oil-resistant rubber
- Width: EEE (3E)
- Size: 24.5~27.0•28.0•29.0(cm)

- Impact absorbing material is used for the cutt part of the 4mm-thick insole
- By sewing the inside of the bag, the shoe envelops your feet and increasing your fitting power!
- M-19 comes with replacement laces.



Includes a bending anti-stepping board ※ Aramid fiber



Adopted 32mm thick sole with even higher cushioning material

M-19 Mantis

- Standard weight:
One foot 520g (for 26.0cm)

- JAN code

Size	White (0136)	Black (4443)
24.5	4969010190117	4969010190315
25.0	4969010190124	4969010190322
25.5	4969010190131	4969010190339
26.0	4969010190148	4969010190346
26.5	4969010190155	4969010190353
27.0	4969010190162	4969010190360
28.0	4969010190186	4969010190384
29.0	4969010190193	4969010190391



White (0136)

Black (4443)



M-20 Mantis

- Standard weight:
One foot 550g (for 26.0cm)

- JAN code

Size	White/Gray (0136)	Black/Black (4444)
24.5	4969010191213	4969010191817
25.0	4969010191220	4969010191824
25.5	4969010191237	4969010191831
26.0	4969010191244	4969010191848
26.5	4969010191251	4969010191855
27.0	4969010191268	4969010191862
28.0	4969010191282	4969010191886
29.0	4969010191299	4969010191893



★ White/Gray (0136)

Black/Black (4444)



01 Safety shoes



A-30 Ange safety

Small size available

Super lightweight

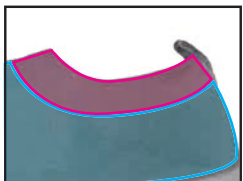
- Production method : Cement type
- Front protection : Steel
- Armor : Polyester
- Shoe sole: EVA + rubber
- Width: E
- Size: 22.5 to 27.0, 28.0, 29.0(cm)
- Standard weight : one foot approx. 265g (for 26.0cm)



Ultra-lightweight type
About 265g (26.0cm one leg)! Very light!!



Single fabric upper
It is excellent in breathability and lightweight, and feels like walking bare feet.



Particular knitting
Uses two types of materials. Fit and hold feeling of the shoes greatly increased!!

JAN code

Size	White(0137)	CHA Tega(0833)	Gray(36)
22.5	4969010201578	4969010201738	4969010200519
23.0	4969010201585	4969010201745	4969010200526
23.5	4969010201592	4969010201752	4969010200533
24.0	4969010201608	4969010201769	4969010200540
24.5	4969010201615	4969010201776	4969010200557
25.0	4969010201622	4969010201783	4969010200564
25.5	4969010201639	4969010201790	4969010200571
26.0	4969010201646	4969010201806	4969010200588
26.5	4969010201653	4969010201813	4969010200595
27.0	4969010201660	4969010201820	4969010200601
28.0	4969010201684	4969010201844	4969010200625
29.0	4969010201691	4969010201851	4969010200632

Size	Black(44)	Red(043)	Olive(009)
22.5	4969010200311	4969010201257	4969010201417
23.0	4969010200328	4969010201264	4969010201424
23.5	4969010200335	4969010201271	4969010201431
24.0	4969010200342	4969010201288	4969010201448
24.5	4969010200359	4969010201295	4969010201455
25.0	4969010200366	4969010201301	4969010201462
25.5	4969010200373	4969010201318	4969010201479
26.0	4969010200380	4969010201325	4969010201486
26.5	4969010200397	4969010201332	4969010201493
27.0	4969010200403	4969010201349	4969010201509
28.0	4969010200427	4969010201363	4969010201523
29.0	4969010200434	4969010201370	4969010201530

- 2-way specification that can also step on the calf

NEW COLOR



White (0137)



※ White sole for indoor use

NEW COLOR



CHA Tega (0833)



Gray (36)



※ White sole for indoor use



Black (44)



Red (043)



Olive (009)



01 Safety shoes

B-27

Bubble sneaker

- Production method : Cement type
- Front protection : Steel
- Coat: PU Mesh•PU
- Shoe soles: Foam rubber
- Width: EEE (3E)
- Size: 24.5 to 27.0•28.0(cm)
- Standard weight: One foot 350g (for 26.0cm)

Super lightweight



- JAN code

Size	Red/Black (4344)	Navy/R.Blue (1105)
24.5	4969010195112	4969010195518
25.0	4969010195129	4969010195525
25.5	4969010195136	4969010195532
26.0	4969010195143	4969010195549
26.5	4969010195150	4969010195556
27.0	4969010195167	4969010195563
28.0	4969010195181	4969010195587

- Safe reflection boards for work in the dark
- It's light even though it has a steel tip!



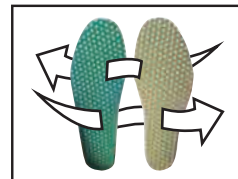
Ultra-lightweight type

One foot is about 350g, super lightweight! So it's hard to get tired.



New blend rubber bottom bubble air sole

Even though it's rubber, it's light and hard to smell. For friction durability, about four times as many as rubber-soled sneakers usually!



TryAnt Insole EVA mesh cup insole with **outstanding cushioning, breathability, and quick drying!**



Red/Black (4344)



Navy/R. Blue (1105)



01 Safety shoes



L-28
Leech

Utility model
obtained

- Production method: Injection type
- Front protection : Steel
- Armor : Polyester
- Shoe soles: Polyurethane
- Width : EE (2E)
- Size: 24.5 to 27.0•28.0
- Standard weight: One foot 420g (for 26.0cm)



Using elastic materials

Elastic fabric with an outstanding fit and cuts trash and foreign matter from the ankles



Focus on rubber cord and fabric

It fits naturally because it is a rubber cord.
Comfort wrapped in a soft fabric



Injection sole

Soft injected sole catches the road surface even on rough roads

□ JAN code

Size	Red/Black (4336)	Navy/Yellow (1145)	White/White (0101)
24.5	4969010200014	4969010200113	4969010200212
25.0	4969010200021	4969010200120	4969010200229
25.5	4969010200038	4969010200137	4969010200236
26.0	4969010200045	4969010200144	4969010200243
26.5	4969010200052	4969010200151	4969010200250
27.0	4969010200069	4969010200168	4969010200267
28.0	4969010200083	4969010200182	4969010200281

- One touch with the band for taking off
- Comes with ankle guard ※Outer only
- Soft Injection sole absorbs the road surface, even on damaged roads
- Peeling of the upper and sole, water intrusion almost pear!



★ Red/Black (4336)



Navy/Yellow (1145)



White/White (0101)



01 Safety shoes

Waterproof Features



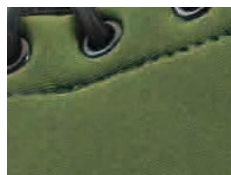
Using elastic materials

Elastic fabric with an outstanding fit and cuts trash and foreign matter from the ankles.



Rubber strings!

A superb tightening feeling like wrapping when you put your feet in!!



Upper fabric

Three-layer structured cloth made with chloroprene rubber.



Bag stitching

By sewing the bellows and the upper into a bag-like shape, it is difficult to get water or dust in it!



Waterproof function

Life waterproofing of 5 cm in height from the sole

※ It is not completely waterproof.



Mottled gray (41)



Olive (009)



R-29 Raganella

Utility model
obtained

- Production method: Injection type
- Front protection : Steel
- Armor : Spandex, Chloroprene Polyester
- Shoe soles: Oil-resistant polyurethane rubber
- Width: EE (2E)
- Size: 23.0 to 27.0, 28.0, 29.0
- Standard weight: One foot 450g (for 26.0cm)

Small size
available

□ JAN code

Size	Mottled gray (41)	Olive (009)
23.0	4969010203121	4969010203015
23.5	4969010203138	4969010203022
24.0	4969010203145	4969010203039
24.5	4969010203152	4969010203046
25.0	4969010203169	4969010203053
25.5	4969010203176	4969010203060
26.0	4969010203183	4969010203077
26.5	4969010203190	4969010203084
27.0	4969010203206	4969010203091
28.0	4969010203213	4969010203107
29.0	4969010203220	4969010203114

- One-touch band for easy on/off
- With ankle guards *only on the outside
- Soft injected sole catches the road surface even on rough terrain, no worries about the sole peeling off!

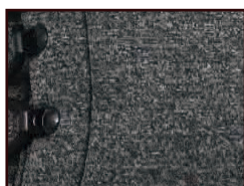
01 Safety shoes

Waterproof Features



Upper fabric

Three-layer fabric with chloroprene rubber softly wraps around the body for an absorbent fit!



Soft sole

Soft and flexible, it catches road surfaces and other objects even on unstable footholds!



Waterproof function

Life waterproofing of 5 cm in height from the sole

※ It is not completely waterproof.



N-31 Neo strider

Utility model
obtained

- Production method: Injection type
- Point : Steel
- Koi : Spandex, Chloroprene, Polyester
- Shoe soles: Oil-resistant polyurethane rubber
- Width : EE (2E)
- Size: 23.0 to 27.0, 28.0, 29.0
- Standard weight: One foot 425g (for 26.0cm)

Small size
available

Super
lightweight

□ JAN code

Size	Black (44)	Mottled gray (41)
23.0	4969010203350	4969010203466
23.5	4969010203367	4969010203473
24.0	4969010203374	4969010203480
24.5	4969010203381	4969010203497
25.0	4969010203398	4969010203503
25.5	4969010203404	4969010203510
26.0	4969010203411	4969010203527
26.5	4969010203428	4969010203534
27.0	4969010203435	4969010203541
28.0	4969010203442	4969010203558
29.0	4969010203459	4969010203565

- Cushion cup insole reduces fatigue
- The upper and sole are molded in one piece (injection molding), so there is no need to worry about the sole peeling off.



Black (44)



Mottled gray (41)



01 Safety shoes



W-22 Water strider

- Production method: Injection type
- Box toe : Steel
- Shell: Spander
Chloroprene
Polyester
- Shoe soles: Oil-resistant polyurethane rubber
- Width : EE (2E)
- Size: 23.0 to 27.0, 28.0, 29.0
- Standard weight: One foot 450g (for 26.0cm)

Small size available

Super lightweight



Water repellent processing

Made from a highly water-repellent material, and made from a water-repellent coating.



Molding the upper and sole together

Since it is an injection type, there is no worry about the sole peeling off!



Soft sole

Even on flexible, soft, and unstable scaffolding
Catch the road surface etc!

□ JAN code

Size	Dark Gray (48)
23.0	4969010193118
23.5	4969010193125
24.0	4969010193132
24.5	4969010193149
25.0	4969010193156
25.5	4969010193163
26.0	4969010193170
26.5	4969010193187
27.0	4969010193194
28.0	4969010193217
29.0	4969010193231

- There is a bag inside! Excellent Fit
- Reversible 2WAY specifications



Dark grey (48)



※when folded



02 Boots



Black



AL-102 Light Boots

- Armor: Natural rubber
- Lining: Knitwear
- Width: EEE (3E)
- Size: 24.5 to 27.0•28.0
- Standard weight: One foot 760g (for 26.0cm)
- Standard dimensions: Total length 31 cm (for 26.0 cm)
- JAN code

Size	Black
24.5	4969010148507
25.0	4969010148514
25.5	4969010148521
26.0	4969010148538
26.5	4969010148545
27.0	4969010148552
28.0	4969010148569



Navy



AL-008 Safty color boots

- Armor: Steel
- Shell: Natural rubber
- Lining: Knitwear
- Width: EEE (3E)
- Size: 24.5 to 27.0•28.0
- Standard weight: One foot 1050g (for 26.0cm)
- Standard dimensions: Total length 35.5 cm (for 26.0 cm)
- JAN code

Size	Navy
24.5	4969010148361
25.0	4969010148378
25.5	4969010148385
26.0	4969010148392
26.5	4969010148408
27.0	4969010148415
28.0	4969010148422

Includes a board to prevent overstepping (sole)



Black



AL-007 Safty boots

- Armor: Steel
- Shell: Natural rubber
- Lining: Knitwear
- Width: EEE (3E)
- Size: 24.5 to 27.0•28.0
- Standard weight: One foot 890g (for 26.0cm)
- Standard dimensions: Total length 31 cm (for 26.0 cm)
- JAN code

Size	Black
24.5	4969010148439
25.0	4969010148446
25.5	4969010148453
26.0	4969010148460
26.5	4969010148477
27.0	4969010148484
28.0	4969010148491

03 Artificial leather

718 Edamame mechanic magic

□ Materials

Palm: Microfiber

Colored silicone rubber

Back of the hand: Polyester

□ Size

S • M • L • LL

(Black only with S)

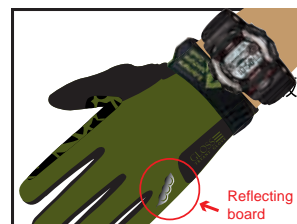
□ Quantity

100 pairs (5 pairs x 20)

- Microfiber (durable and flexible)
- Color silicone chamofra pattern (durability and increased grip strength)
- Glossy Komeli (Elastic, breathable, sweat-absorbing, quick-dryin)



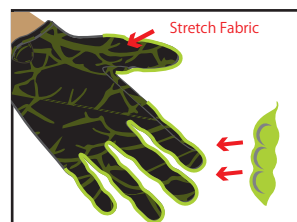
Reflecting board



Wrist short slip-on type

Wide range of wrist motion, easy to put on and take off without being hit by a wristwatch!

+ cute edamame reflective board!



Edamame Sewing

Catch fingers along joints
Fits like a suction cup on the finger



Khaki



Silver



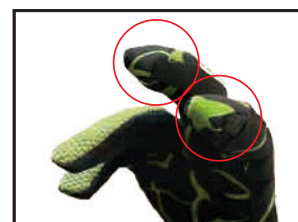
Black

Small size available



3D sewing

Fingers and palms are naturally easy to grip



F. F Sewing

No stitches on the index and middle finger tips.

No stitches in the fingernails!

Stress free!

Even detailed work is OK!

□ JAN code

Size	Khaki	Silver	Black
S	/		4969010180910
M	4969010180958	4969010180989	4969010180927
L	4969010180965	4969010180996	4969010180934
LL	4969010180972	4969010181009	4969010180941

03 Artificial leather

719 Edamame mechanic slip-ons

□ Materials

Palm: Black Microfiber Color
Silicon Rubber
Back of hand: Polyester

□ Size

S • M • L • LL
(Black only with S)

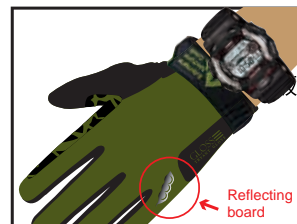
□ Quantity:

100 pairs (5 pairs x 20)

- Microfiber (durable and flexible)
- Color silicone camoufla pattern
(Durability and increased grip strength)
- Glossy Komeli
Elastic, breathable, sweat_ absorbing, quick-drying



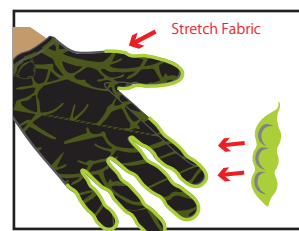
Reflecting board



Wrist short slip-on type

Wide range of wrist motion, easy to put on and take off without being hit by a wristwatch!

+ cute edamame reflective board!



Edamame Sewing

Catch fingers along joints
Fits like a suction cup on the finger



Khaki

Black

Small size available

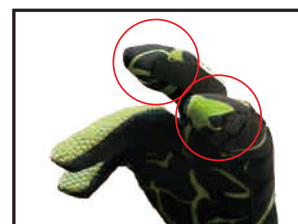


3D sewing

Fingers and palms are naturally easy to grip

□ JAN code

Size	Khaki	Black
S		4969010181016
M	4969010181054	4969010181023
L	4969010181061	4969010181030
LL	4969010181078	4969010181047



F. F Sewing

No stitches on the index and middle finger tips.

No stitches in the fingernails!

Stress free!

Even detailed work is OK!

03 Artificial leather

716 3D GLOSS PU

□ Materials

Palm: Microfiber
Colored silicone rubber
Back of the hand: Polyester

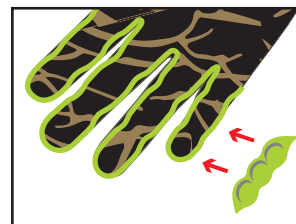
□ Size

M • L • LL

(Champagne Gold only with SS•S)

□ Quantity

100 pairs (10 pairs x 10)



Edamame Sewing

Catch fingers along joints
Fits like a suction cup on the finger



Wrist Short Slippon Type

Wide range of wrist motion, easy to put on and take off without being hit by a wristwatch!



Turquoise blue



White gray



3D sewing

Fingers and palms are naturally easy to grip

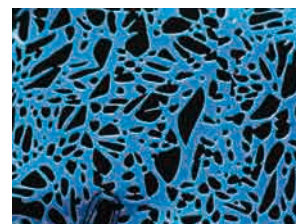


Champagne gold

Small size available

□ JAN code

Size	Turquoise blue	White gray	Champagne gold
SS			4969010180415
S			4969010180422
M	4969010180538	4969010180637	4969010180439
L	4969010180545	4969010180644	4969010180446
LL	4969010180552	4969010180651	4969010180453

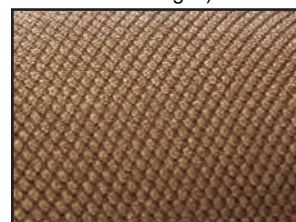


Microfiber

(Durability and flexibility increased)

Color silicone camoufla pattern

(Durability and increased grip strength)



Glossy Komeli

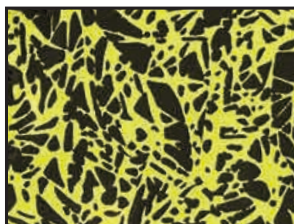
Elasticity, breathability, and quick-drying sweat. Glossy fabric with presence

03 Artificial leather



Short wrist type

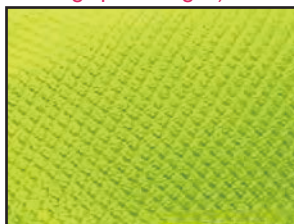
Wide range of wrist motion, easy to put on and take off without being hit by a wristwatch!



Black microfiber (Durability and flexibility increased)

x

Color silicone camouflage pattern
(Durability and increased grip strength)



Glossy Komeli

Elasticity, breathability, and quick-drying sweat



715 SHORT GLOSS PU

- Materials
 - Palm:Black Microfiber Color
 - Silicon Rubber
 - Back of hand:Polyester

- Size
 - M•L•LL
 - (Peach range only with SS•S)

- Enrollment
 - 100 twins (10 twins x 10)



Royal blue



Black



Light yellow



Peach orange

Small size available

□ JAN code

Size	Royal blue	Black	Light yellow	Peach orange
SS				4969010180323
S		4969010180149		4969010180330
M	4969010180040	4969010180156	4969010180248	4969010180347
L	4969010180057	4969010180163	4969010180255	4969010180354
LL	4969010180064		4969010180262	4969010180361

03 Artificial leather

713 GLOSS PU magic type

- Materials
Palma / Black Microfiber • Silicon Rubber
Hand Back / Polyester

- Size
M•L•LL

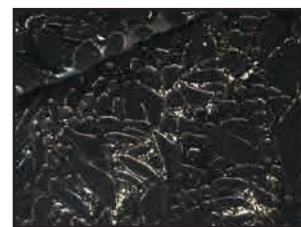
- Quantity
100 pairs (10 pairs x 10)

- JAN code

color	Size	J A N
Pink	M	4969010179327
	L	4969010179334
	L L	4969010179341



Pink



Black microfiber
(durability and flexibility UP) ×
Color silicon
camouflage pattern
(durability and grip UP)



Glossy Komeli

Elasticity, breathability,
and quick-drying sweat

817 Bright Grip

- Materials
Palm: Microfiber
Silicon rubber (5 layers)
Back: Polyester

- Size
M • L • L L

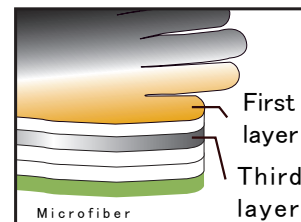
- Quantity
100 pairs (10 pairs x 10)

- JAN code

color	Size	J A N
Light Green	M	4969010179228
	L	4969010179235
	L L	4969010179242
Black	M	4969010179266
	L	4969010179273
	L L	



★ Light Green



Silicon rubber 5-layer structure

1st layer: Slip resistant silicone rubber with smooth finish

Third layer: Highly tenacious silicon rubber friction

→Highly durable with excellent abrasion resistance



★ Black

Characteristics of Silicon Rubber

The intensity and softness are hardly altered by exposure to ultraviolet rays or rain and wind.

It is excellent in heat resistance and cold resistance, and can be used at -70 °C to 350 °C for short periods.

It is superior to regular rubber in terms of heat conduction, flame retardancy, and electrical insulator.

03 Artificial leather

HC-150 High Claw

□ Materials

Palm: Microfiber
Silicone Gum
Outer: Polyester
Silicon rubber

□ Size

Jr.L • S • M • L • LL

□ Quantity

100 pairs (5 pairs x 20)

□ JAN code

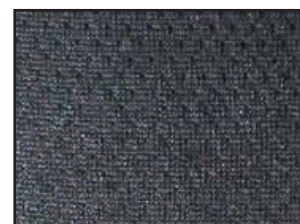
color	Size	J A N
Black Silver	Jr.L	4969010180736
	S	4969010180743
	M	4969010180750
	L	4969010180767
	LL	4969010180774
White Gold	Jr.L	4969010180835
	S	4969010180842
	M	4969010180859
	L	4969010180866
	LL	4969010180873

Small size available



Slit (elastic fabric) at joint parts

Makes it easier to move the joint parts.



Elastic mesh fabric

Good elasticity and breathability



Silicon rubber with strong grip

Overwhelming grip force



Slit (elastic fabric) at base of thumb

Easier to spread the palm of the hand



Black/Silver



White/Gold



Wrap Style

Ensuring breathability and workability

03 Artificial leather



Soft

Microfiber fabric

Durability, flexibility, light weight, quick sweat drying, and unique coloring have a good texture!



More durable!

Soft and durable for soft and hard work!

*Only backstitching is available for the large attachments.



※ Expansion

Stylish Big Tag

One point! eye-catching, large tags

+α piping, stretching also GOOD!



Index step

A soft and durable tool that can handle both soft and hard work!



Odorless and washable!

Since artificial leather is used, it is flexible, odorless and washable.

Super lightweight



Blue Ash

819

Yawara kawate back stitch

Materials
Artificial leather (microfiber)

Size
M • L • L L

Quantity
120 pairs (5 pairs x 24)

JAN code

color	Size	J A N
Blue Ash	M	4969010179150
	L	4969010179167
	L L	4969010179174

Super lightweight



Blue Ash

820

Yawara kawate Magic type

Materials
Artificial leather (microfiber)

Size
L • L L

Quantity
120 pairs (5 pairs x 24)

JAN code

Color	Size	J A N
Blue Ash	L	4969010179198
	L L	4969010179204

04 Synthetic leather

717 CUT RESISTANT GLOVE

□ Materials

Palm: High-strength polyethylene/polyurethane
 Back/Mesh part: Polyester
 /Other than mesh: High-strength polyethylene polyester

□ Size

M • L • LL

□ Quantity

100 pairs (5 pairs x 20)

□ JAN code


color	Size	J A N
Black	M	4969010178627
	L	4969010178634
	L L	4969010178641



717 L size



- Industrial waste collection / interior • exterior • electric work / sheet metal work • glass work • automobile • steel industry / construction • civil engineering work • even for the guards ... in every work

 The part of it is made to be durable.

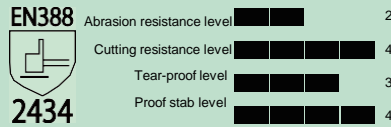


Made with cut-resistant fabric

※N.B Please be aware that it is not a fabric that can withstand any other parts.

This is a standard to describe the safety required of gloves under the unified standard of Europe (EN). (*Figure 1)

The 4 tests below are specified.



Quality standards based on EN388

Test criteria	Level 1	Level 2	Level 3	Level 4	Level 5
Wear resistance (cycles)	Over 100 Less than 500	Over 500 Less than 2000	Over 2000 Less than 8000	Over 8000	
Cut-out creativity (index)	1.2 More than that Less than 2.5	2.5 More than that Less than 5.0	5.0 More than that Less than 10.0	10.0 More than that Less than 20.0	20.0 More than that
Tear resistance (newton)	10 or more Less than 25	25 or more Less than 50	50 or more Less than 75	75 or more	
Sticking resistance (newton)	More than 20 Less than 60	Over 60 Less than 100	Over 100 Less than 150	Over 150	

※ Figure 1: European Standard EN388



M size

**CUT
RESISTANT**



L size

**CUT
RESISTANT**



LL size

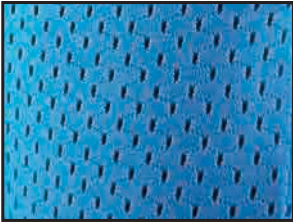
**CUT
RESISTANT**

04 Synthetic leather



Invincible stretching power!

Gentle fit in your hand!



New method manufacturing method beehive mesh

Excellent permeability to the fingertips, prevention of steaming and quick drying of sweat!



L (Blue)



M (Magenta)

M (Orange)

L (Emerald)

198 Stretch Soft

- Materials
Palm: Polyurethane
Back: Nylon*
- (※New production method: Beehive mesh)

- Size
M • L • LL
- Quantity
100 pairs (10 pairs x 10)

- JAN code

color	Size	J A N
Magenta	M	4969010178849
Orange		4969010178863
Emerald	L	4969010178870
Blue		4969010178856



Compatible with touch panel (5 fingers)



Microfiber of the thumb

Part wipes away dust



Using stretch mesh

Less steaming and slippage



★ Blue



Black

621 Stretch Touch

- Materials
Palm: Polyurethane
Back: Nylon
Microfiber

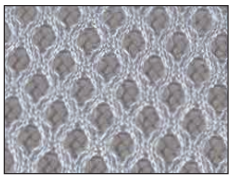
- Size
M • L • LL
- Quantity
100 pairs (10 pairs x 10)

- JAN code

color	Size	J A N
Blue	M	4969010178924
	L	4969010178931
	L L	4969010178948
Black	M	4969010178962
	L	4969010178979
	L L	4969010178986

05 Leather gloves

Mesh
inside



Mesh fabric on
the inside

Comfortable to use
without stickiness.
Comfortable in all
seasons!



Basic spec

Use high-quality cow floor
leather with intense
thickness



Patchwork



9200 Pig leather crest magic type

- Materials
Pig leather crest
Mesh (polyester)
- Size
M • L • LL
- Quantity
120 pairs (10 pairs x 12)
- JAN code

Size	JAN
M	4969010458521
L	4969010458538
L L	4969010458545

OiL



Patchwork



8588 Cow-floor leather oil

- Materials
Oxhide leather (oil
processing)
Mesh (polyester)
- Size
M • L • LL
- Quantity
120 pairs (10 pairs x 12)
- JAN code

Size	JAN
M	4969010458323
L	4969010458330
L L	4969010458347

TAG-66 Pitarihamaru

- Materials
Bovine floor leather / Leather
- Size
Small • Regular • Large
- Quantity
120 pairs (12 pairs x 10)
- JAN code

Size	JAN
Small	4969010459115
Regular	4969010459122
Large	4969010459139



05 Leather gloves

3288

Cow-floor leather oil

Magic blackcap



- Materials
Beef floor leather (oil processing)

- Size: M • L

- Quantity
120 pairs (10 pairs x 12)

- JAN code

Size	JAN
M	4969010458910
L	4969010458927



Wrist Magic

Because it is a magic type, it does not slip easily and does not come off easily.



4588

Cow-floor leather oil
Double-stitched black



- Materials
Beef floor leather (oil processing)

- Size: M • L

- Quantity
120 pairs (10 pairs x 12)

- JAN code

Size	JAN
M	4969010458811
L	4969010458828



Special oil processing

Soft and outstanding workability! Difficulty getting hard even after washing

Black fitting

Attach the thumb base to increase the strength!!

05 Leather gloves

916 SHORT SHEEP

□ Materials: Sheep leather

□ Size

Jr • S • M • L • LL • 3L

□ Quantity

120 pairs (10 pairs x 12)

□ JAN code

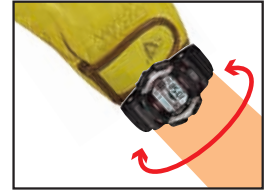
Size	JAN
Jr	4969010181115
S	4969010181122
M	4969010181139
L	4969010181146
LL	4969010181153
3L	4969010181160

- Easy to pull and attach with wrist black reinforcement!
- Baked mark on the mountain logo that looks
- For civil engineering and architecture, Sunday carpenters, outdoors, BBQ, mountain climbing, motorcycles, etc.



Made of sheepskin leather that is easy to get used to

Small size available



Short wrist type

Wide range of wrist motion, easy to put on and take off without being hit by a wristwatch!



Gold sheepskin

The suppleness of sheepskin's characteristics and unique suppleness



Snugly fit

We are particular about the size around the finger and instep.

902 LEATHER CRAFT Cotton inside

□ Materials

Beef crest (sofa leather inside out) Cotton

□ Quantity

120 pairs (5 pairs x 24)

□ Size

M • L • LL

□ JAN code

Size	JAN
M	4969010457715
L	4969010457722
LL	4969010457739



※color assortment



Use of sofa leather

Because it is coated, it is hard to fade in color, and it does not become hard even if it gets wet with water.

Strengthening of Coated Cowhide Leather over Floor Leather!

Can be used lightly in the summer.

Warm and usable in winter

Inner cotton

In summer, it is easy to absorb sweat and eliminates stickiness and pounding. It is even easier to dry.

Warm in winter and for cold protection!

- Coated sofa leather is turned inside out and processed!
- Color Assortment (You can't choose the color) You can enjoy the color even with your leather hands.
- Washable leather gloves

06 Coating Gloves

1025 TAGrip

□ Materials

Palm: Natural rubber
Out: Nylon 13 gauge,
Polyester, etc.

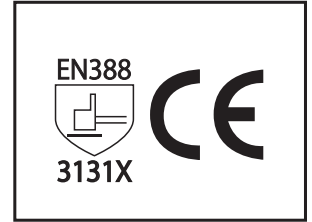
□ Size

S • M • L • LL

□ Quantity:

120 pairs (10 pairs x 12)

From light work to heavy work!
Transportation, cargo handling,
interior, and exterior, machinery,
automotive factories, civil
engineering, and construction,
sunday carpenters and gardeners



Products conforming to EN388 safety standards



Deodorizing processing
Cut the bad smell of natural rubber



Material
13 gauge nylon fits perfectly with a nice feel



Durable, gun-rest, gripping and breathable



Red



Blue

□ JAN code

Size	Red	Blue
S	4969010176111	4969010176210
M	4969010176128	4969010176227
L	4969010176135	4969010176234
LL	4969010176142	4969010176241



Logo print
Eye-catching,
stylish impression
with vivid colors!

06 Coating Gloves

205

PU GLOVE TOUCH 5P

□ **Materials**

Palm/Polyurethane • graphene
Gloves / Polyester 13 Gauge

□ **Size**

S • M • L • LL

□ **Quantity: Fifty pairs**

□ **JAN code**

Size	Wrist	JAN
S	White	4949010175411
M	Brawn	4969010175428
L	Gray	4969010175435
LL	Black	4969010175442



Gray



Touch panel support
(3 fingers)

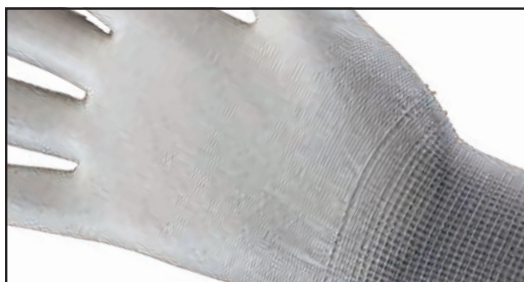


Anti-slip effect

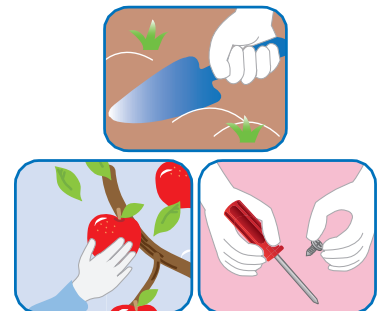
[Bosoboso feeling] in the palm of the hand exerts an anti-slip effect!!



※Wrist thread color



※Enlarged polyurethane coating on palm



- Excellent breathability and perfect fit
- Agricultural work and fruit harvesting and sorting
- Perfect for precision work on machines

06 Coating Gloves

175 PU GLOVE 10P

Materials

Palm/Polyurethane
Gloves / Polyester 13 Gauge

Size

SS • S • M • L • LL

Quantity: Fifty pairs

JAN code

Size	Wrist	J A N
S S	Pink	4949010175107
S	White	4969010175114
M	Green	4969010175121
L	Gray	4969010175138
L L	Yellow	4969010175145

Small size available



White



Anti-slip effect

[Bosoboso feeling] in the palm of the hand exerts an anti-slip effect!!



- Excellent breathability and perfect fit
- Agricultural work and fruit harvesting and sorting
- Perfect for precision work on machines



185 PU GLOVE 10P

JAN code

Size	Wrist	J A N
S S	Pink	4969010175206
S	White	4969010175213
M	Green	4969010175220
L	Gray	4969010175237
L L	Yellow	4969010175244



Black



195 PU GLOVE 10P

JAN code

Size	Wrist	J A N
S S	Pink	4969010175305
S	White	4969010175312
M	Green	4969010175329
L	Gray	4969010175336
L L	Yellow	4969010175343



Khaki



07 Military gloves • Non-slip gloves



KT-600 Military gloves, Japan's best

- Materials: Polyester, cotton, etc.
- Weight: Approx. 600g
- Quality: 2-piece knitted 7-gauge
- Fibers: spun yarn
- Size: Free
- Number: 60 dozen

□ JAN code

Size	J A N
Free	4969010111310



K-620 Military gloves, Japan's best

- Materials: Polyester, cotton, etc.
- Weight: Approx. 620g
- Product Quality: 2-half knitted, 7-gauge
- Fibers: spun yarn
- Size: Free
- Number: 60 dozen

□ JAN code

Size	J A N
Free	4969010139406



3300 Iron Man anti-slip

- Material:
Gloves: Polyester, Cotton and other
Outside: Non-slip / Vinyl Chloride
- Product Quality: 7 gauge
- Size: Free
- Number: 40 dozen

□ JAN code

Size	J A N
Free	4969010330001



KT-126 Nigi-botsu

- Material:
Gloves: Polyester
Cotton and other non-slip
Outside: Vinyl Chloride
- Product Quality: 7 gauge
- Size: Free
- Number: 80 pairs

Five
pairs

□ JAN code

Size	J A N
Free	4969010111389

08 Raincoat

**1016
NUOVO**

**Light and comfortable !
Strong waterproof !**

Super
lightweight

□ Materials

Surface: Polyester (PU coating)

Lining: Polyester

□ Size

M • L • LL • 3L • 4L • 5L

□ Quantity

20 pieces

□ JAN code

Size	J A N
M	4969010600098
L	4969010600104
L L	4969010600111
3 L	4969010600128
4 L	4969010600135
5 L	4969010600412



Pants:Black

Jacket:Navy



Removable hood

Detachable and hardly disturbing when working. Transparent hood for good visibility.



Hiring often

By applying a single layer of fabric to the back, rain and wind are less likely to penetrate.



Pocket

Chest pocket with flap to Prevents rain from entering
Convenient for storing ballpoint pens and other small items



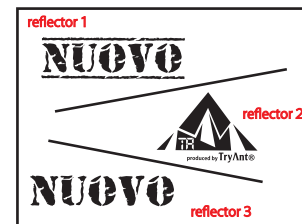
2-way feet

Use of hem buttons makes it easy to put them in boots.



All-out mesh

The mesh lining prevents stuffiness and provides a dry and comfortable fit.



Original reflective print

With design reflective print
Enhances visibility in dark areas.
Reflective panels (3 locations)
(Upper: left arm/left hem, lower: left calf)

09 SOCKS

SOCKS

Material

Polyester, cotton, nylon, polyurethane

JAN code

Size(1size only)	J A N
25.0~27.0	4969010601095



TS-06 Copper Fiber Work Socks
(2Pairs)

copper

98% deodorant rate with the power of copper
Strong antibacterial deodorization. Copper has strong antibacterial action and by blending it into fibers and by blending it with fibers, it inhibits unpleasant odors.

Cause of foot odor isovaleric acid, the cause of foot odor, is removed 98% of the time. (after 5 washes, according to a public institution)



T S - 0 1 Chimayo pattern
(3Pairs)

Material
Polyester, cotton, nylon, polyurethane

Size(1size only)	J A N
25.0~27.0	4969010601019



T S - 0 2 Border
(3Pairs)

Material
Polyester, cotton, nylon, polyurethane

Size(1size only)	J A N
25.0~27.0	4969010601026



T S - 0 3 Middle height line water pattern
(3Pairs)

Material
Polyester, cotton, polyurethane

Size(1size only)	J A N
25.0~27.0	4969010601033



T S - 0 4 Arch Up Support
(2Pairs)

Material
Polyester, cotton, polyurethane

Size(1size only)	J A N
25.0~27.0	4969010601040



T S - 0 5 5 finger crew length
(3Pairs)

Material
Polyester, cotton, polyurethane

Size(1size only)	J A N
25.0~27.0	4969010601057



T P - 0 1 Fit catch
(round-toed • 5pairs)

Material
Polyester, cotton, polyurethane

Size(1size only)	J A N
25.0~27.0	4969010601064



T P - 0 2 Cotton 100%
(round-toed • 5pairs)

Material
Cotton, polyurethane

Size(1size only)	J A N
25.0~27.0	4969010601071



T P - 0 3 5 finger
(5 finger • 5Pairs)

Material
Polyester, cotton, polyurethane

Size(1size only)	J A N
25.0~27.0	4969010601088



TA-426 PU TRY

- Materials** : Palm of hand/
Polyurethane
synthetic leather
Back of hand/Polyester
Back of hand/polyester
- Size: M • L • LL
- Quantity:120pairs(10pairs×12)



- 1.Touch panel 5 finger support
- 2.Excellent grip performance

JAN code

Size	J A N
M	4969010340017
L	4969010340024
L L	4969010340031

TA-533 Oxhide leather glove

- Materials** : oxhide
- Size: Free
- Quantity:120pairs(10pairs×12)



1. No seam contact when wearing
2. Moderate softness

JAN code

Size	J A N
Free	4969010340314

TA-538 Pig leather crest magic type

- Materials** : pigcrest
- Size: M • L • LL
- Quantity:120pairs(10pairs×12)



Standard
Magic type of pig crest

JAN code

Size	J A N
M	4969010458422
L	4969010458439
L L	4969010458446

TA-750 EVA sandal

- Materials** : EVA resin
- Size: M • L • LL
- Quantity:24pairs



1. Breathable and comfortable to wear
2. Lightweight, water-resistant and durable
3. No fatigue even after wearing for a long time.

JAN code

Size	J A N
M	4969010340826
L	4969010340833
L L	4969010340840



*The image is an imaginary photograph.

Support Your Hard Life
TryAnt[®]
SINCE 2009

株式会社 **キタヤマ**

KITAYAMA Co.,Ltd.
4-26 OMORIHONCHO 2-CHOME OTAKU TOKYO

<http://www.tryant.jp>
<http://www.e-kitayama.jp>

